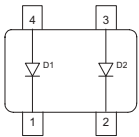


**Silicon Switching Diode**

- Electrically insulated high-voltage medium-speed diodes
- Pb-free (RoHS compliant) package <sup>1)</sup>
- Qualified according AEC Q101


**BAW101**


Type	Package	Configuration	Marking
BAW101	SOT143	parallel	JPs

**Maximum Ratings** at  $T_A = 25^\circ\text{C}$ , unless otherwise specified

Parameter	Symbol	Value	Unit
Diode reverse voltage	$V_R$	300	V
Peak reverse voltage	$V_{RM}$	300	
Forward current	$I_F$	250	mA
Peak forward current	$I_{FM}$	500	
Peak forward current	$I_{FM}$	500	mA
Surge forward current, $t = 1 \mu\text{s}$	$I_{FS}$	4.5	A
Non-repetitive peak surge forward current	$I_{FSM}$	-	
Total power dissipation $T_S \leq 35^\circ\text{C}$	$P_{tot}$	350	mW
Junction temperature	$T_j$	150	°C
Storage temperature	$T_{stg}$	-65 ... 150	

<sup>1</sup>Pb-containing package may be available upon special request

**Thermal Resistance**

Parameter	Symbol	Value	Unit
Junction - soldering point <sup>1)</sup> BAW101	$R_{thJS}$	$\leq 330$	K/W

**Electrical Characteristics at  $T_A = 25^\circ\text{C}$ , unless otherwise specified**

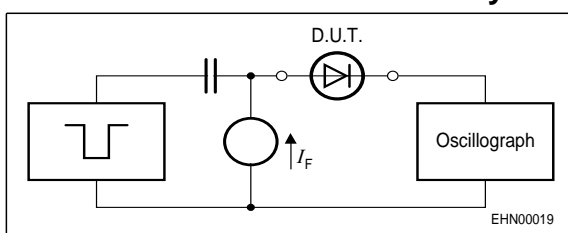
Parameter	Symbol	Values			Unit
		min.	typ.	max.	

**DC Characteristics**

Breakdown voltage $I_{(BR)} = 100 \mu\text{A}$	$V_{(BR)}$	300	-	-	V
Reverse current $V_R = 250 \text{ V}$ $V_R = 250 \text{ V}, T_A = 150^\circ\text{C}$	$I_R$	-	-	0.15 50	$\mu\text{A}$
Forward voltage $I_F = 100 \text{ mA}$	$V_F$	-	-	1.3	V

**AC Characteristics**

Diode capacitance $V_R = 0 \text{ V}, f = 1 \text{ MHz}$	$C_T$	-	6	-	pF
Reverse recovery time $I_F = 10 \text{ mA}, I_R = 10 \text{ mA}$ , measured at $I_R = 1 \text{ mA}$ , $R_L = 100 \Omega$	$t_{rr}$	-	1	-	$\mu\text{s}$

**Test circuit for reverse recovery time**


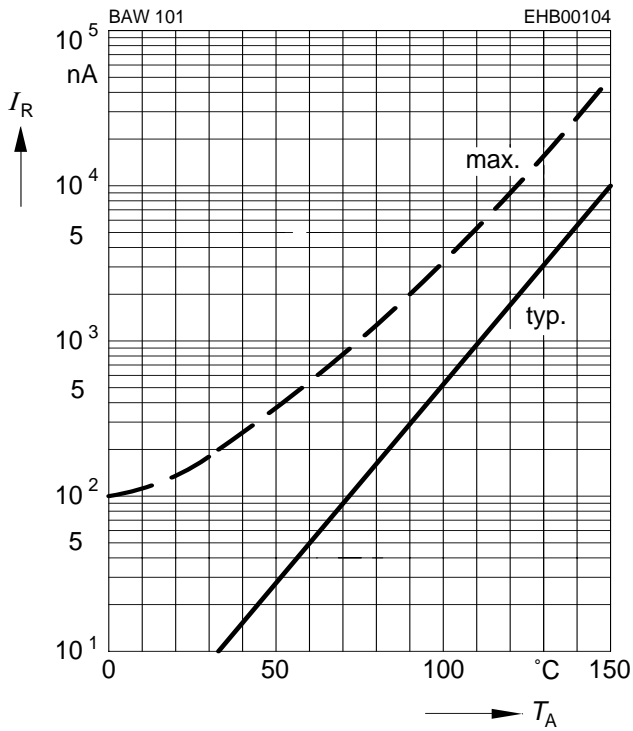
Pulse generator:  $t_p = 10 \mu\text{s}$ ,  $D = 0.05$ ,  $t_r = 0.6 \text{ ns}$ ,  
 $R_i = 50 \Omega$

Oscilloscope:  $R = 50 \Omega$ ,  $t_r = 0.35 \text{ ns}$ ,  $C \leq 1 \text{ pF}$

<sup>1)</sup>For calculation of  $R_{thJA}$  please refer to Application Note Thermal Resistance

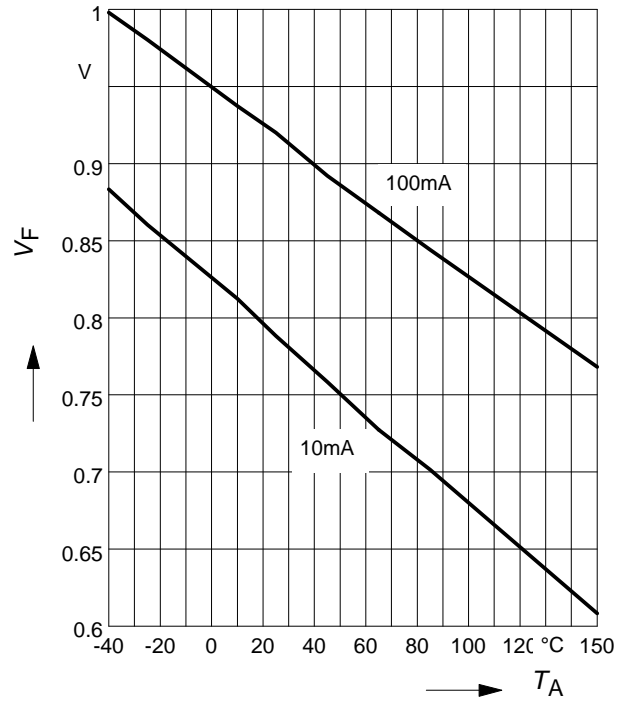
Reverse current  $I_R = f(T_A)$

$V_R = 250V$



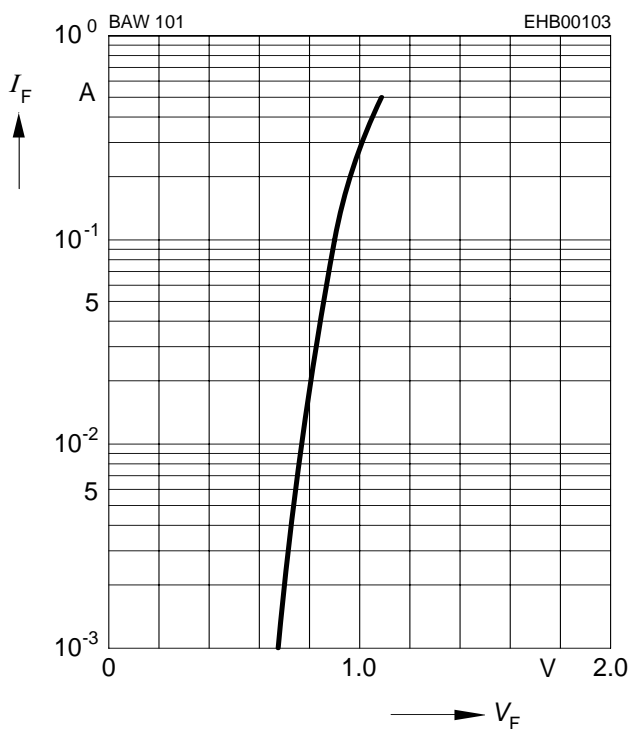
Forward Voltage  $V_F = f(T_A)$

$I_F = \text{Parameter}$



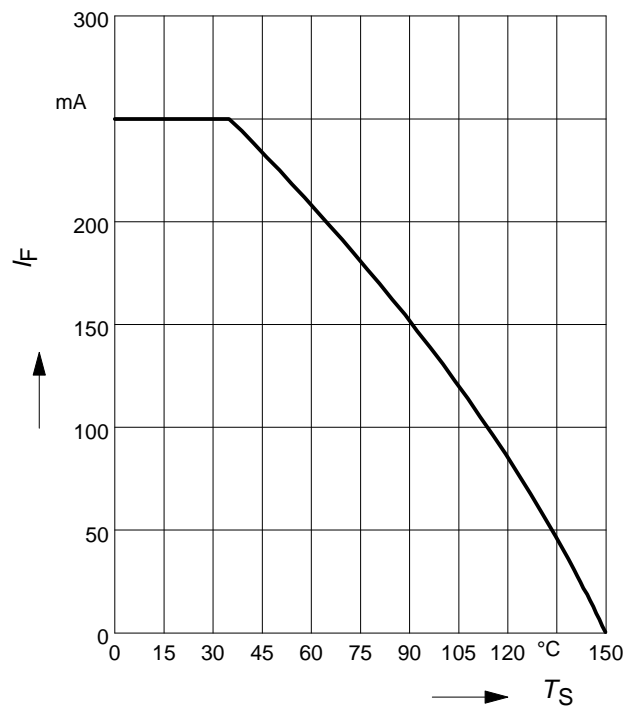
Forward current  $I_F = f(V_F)$

$T_A = 25^\circ C$

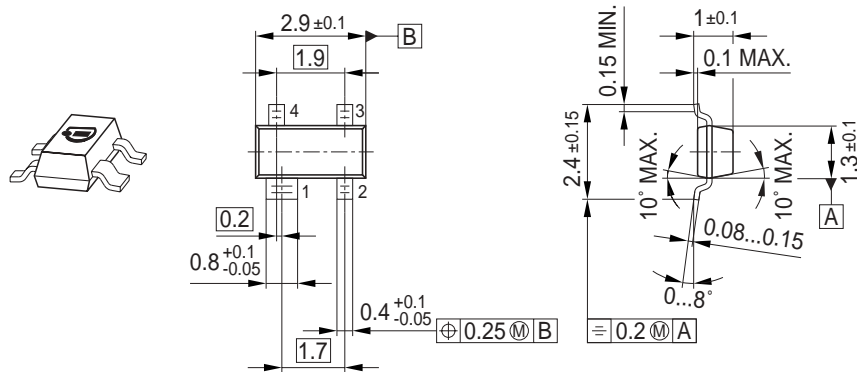


Forward current  $I_F = f(T_S)$

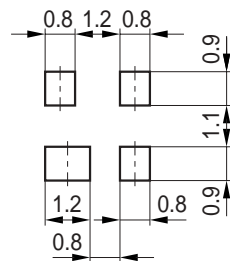
BAW101



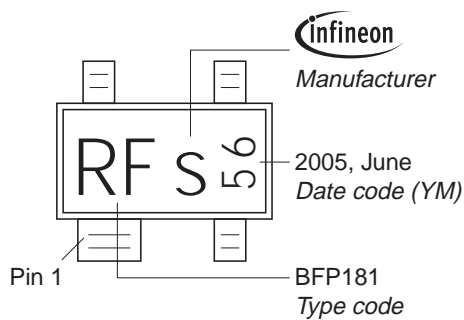
Package Outline



Foot Print

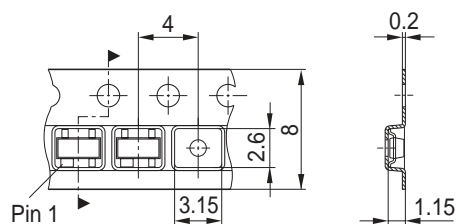


Marking Layout (Example)



Standard Packing

Reel ø180 mm = 3.000 Pieces/Reel  
 Reel ø330 mm = 10.000 Pieces/Reel



Edition 2006-02-01

Published by

Infineon Technologies AG

81726 München, Germany

© Infineon Technologies AG 2007.

All Rights Reserved.

### **Attention please!**

The information given in this dokument shall in no event be regarded as a guarantee of conditions or characteristics ("Beschaffenheitsgarantie"). With respect to any examples or hints given herein, any typical values stated herein and/or any information regarding the application of the device, Infineon Technologies hereby disclaims any and all warranties and liabilities of any kind, including without limitation warranties of non-infringement of intellectual property rights of any third party.

### **Information**

For further information on technology, delivery terms and conditions and prices please contact your nearest Infineon Technologies Office ([www.infineon.com](http://www.infineon.com)).

### **Warnings**

Due to technical requirements components may contain dangerous substances. For information on the types in question please contact your nearest Infineon Technologies Office.

Infineon Technologies Components may only be used in life-support devices or systems with the express written approval of Infineon Technologies, if a failure of such components can reasonably be expected to cause the failure of that life-support device or system, or to affect the safety or effectiveness of that device or system.

Life support devices or systems are intended to be implanted in the human body, or to support and/or maintain and sustain and/or protect human life. If they fail, it is reasonable to assume that the health of the user or other persons may be endangered.

单击下面可查看定价，库存，交付和生命周期等信息

[>>Infineon Technologies\(英飞凌\)](#)

[>>点击查看相关商品](#)